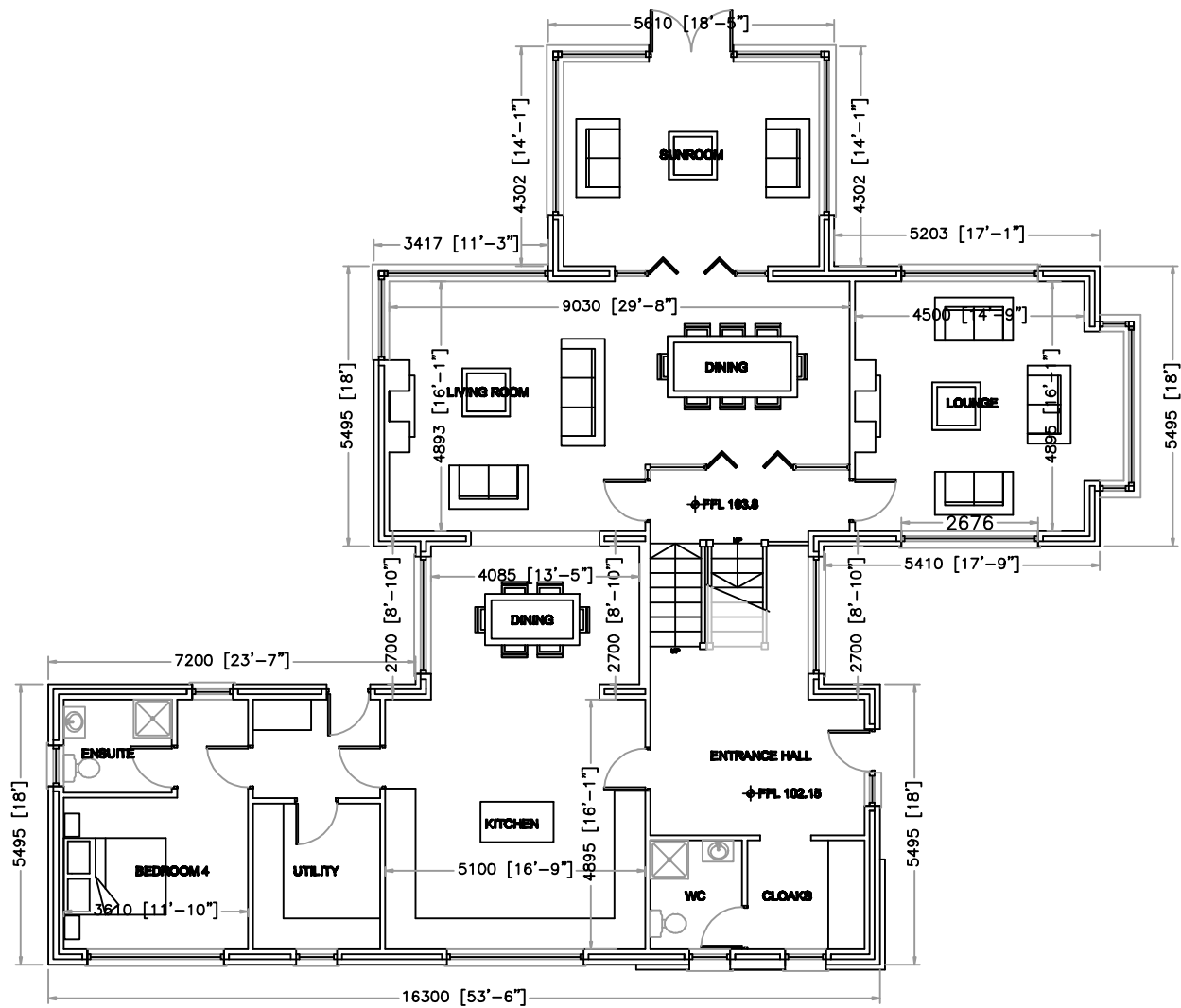


# House No. 7

© This Drawing is Copyright to Goleen Developments Ltd.



## FRONT ELEVATION



## GROUND FLOOR PLAN

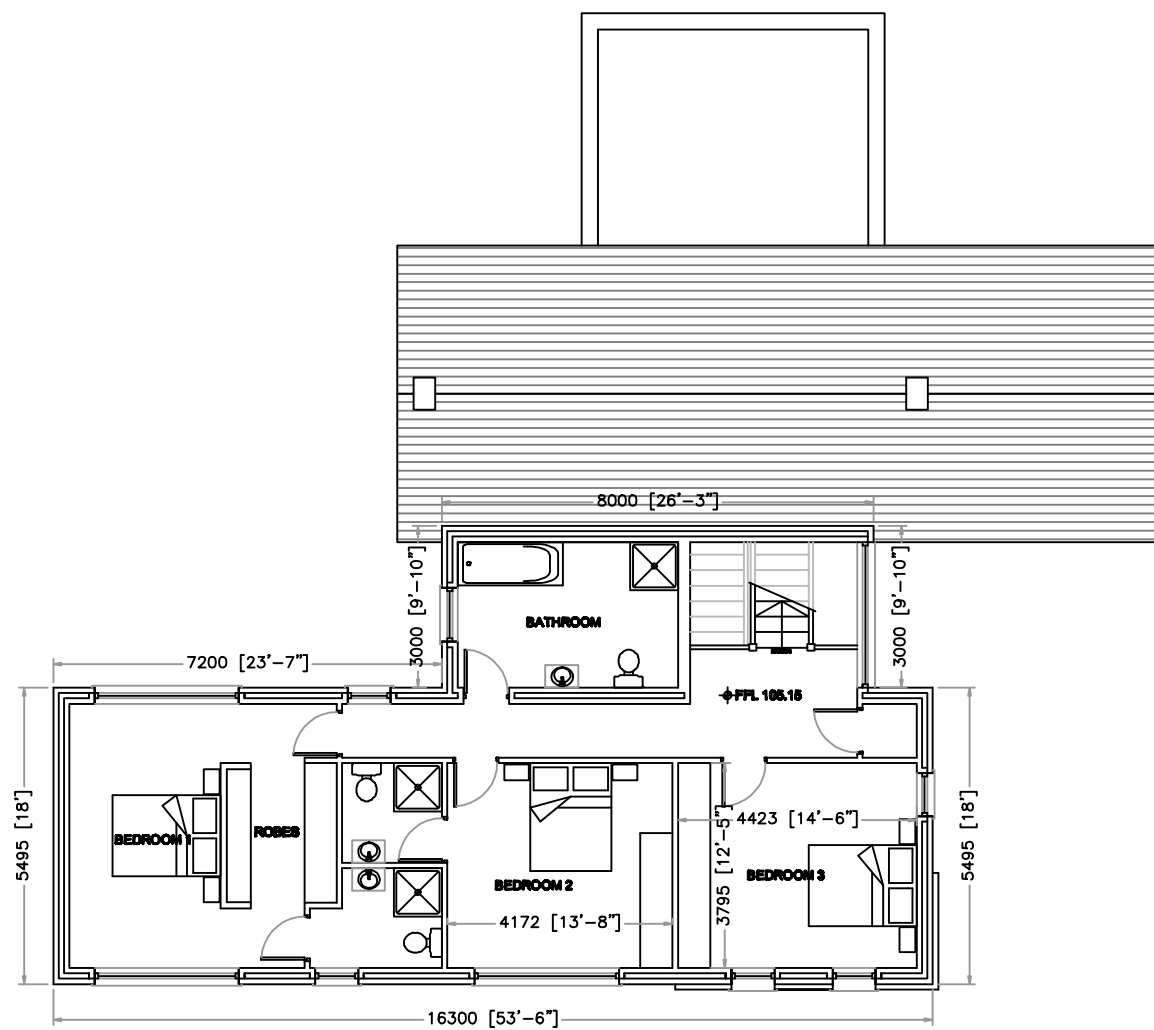
Ground Floor area:	191 sq.m 2055sq. ft
First Floor area:	99 sq.m 1065sq. ft
Total Floor area:	290 sq.m 3120sq. ft

# House No. 7

© This Drawing is Copyright  
to Goleen Developments Ltd.



## REAR ELEVATION



## FIRST FLOOR PLAN

Ground Floor area:	191 sq.m 2055sq. ft
First Floor area:	99 sq.m 1065sq. ft
Total Floor area:	290 sq.m 3120sq. ft